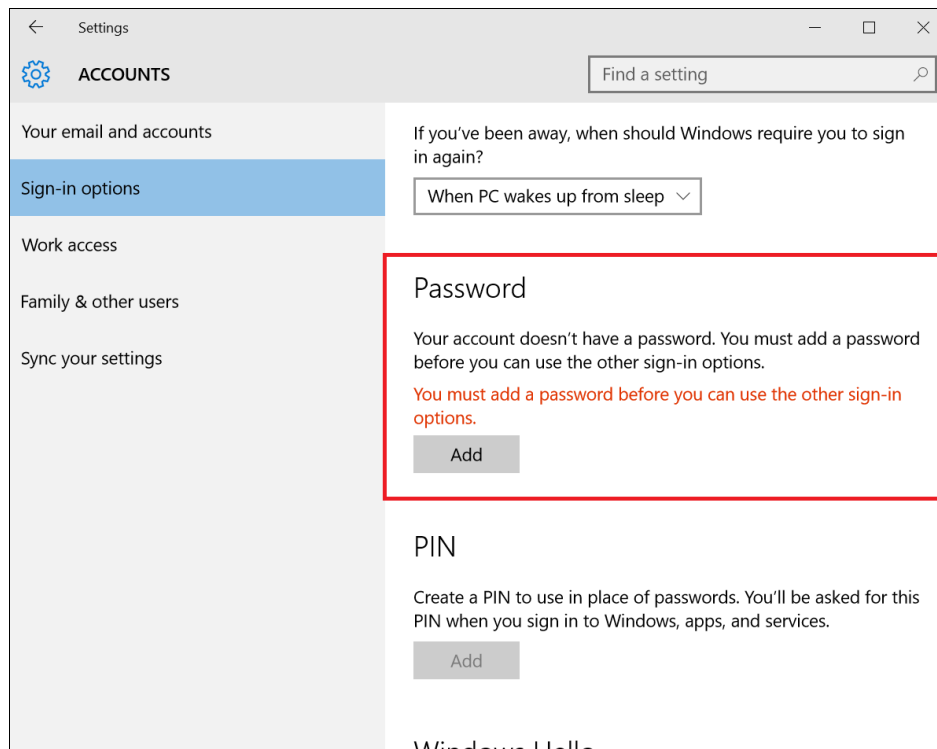
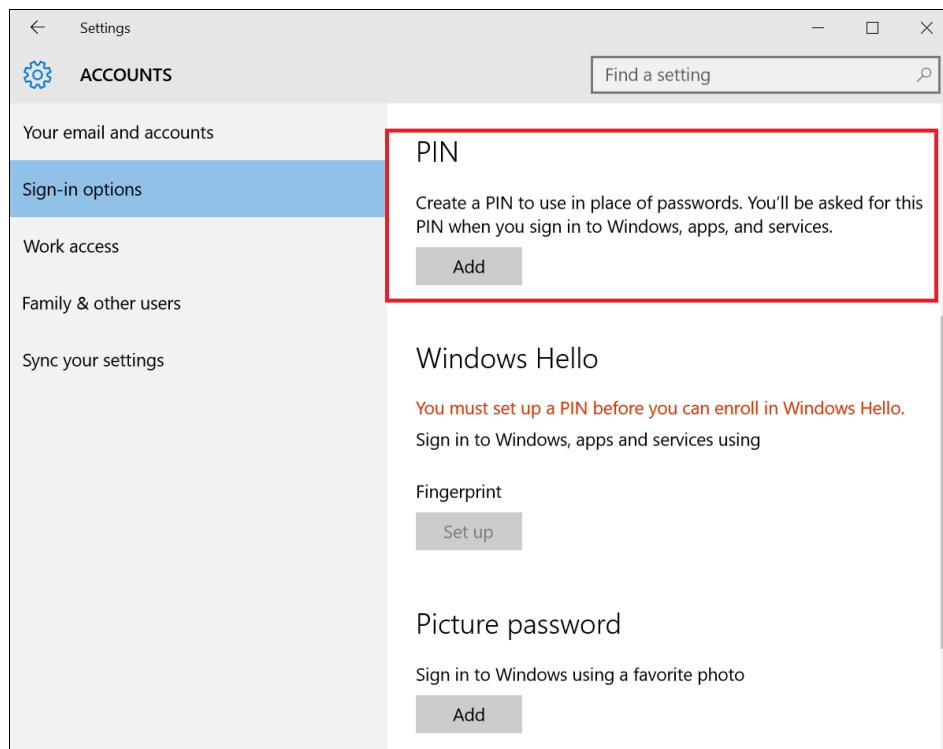


How to enroll finger in Windows Hello

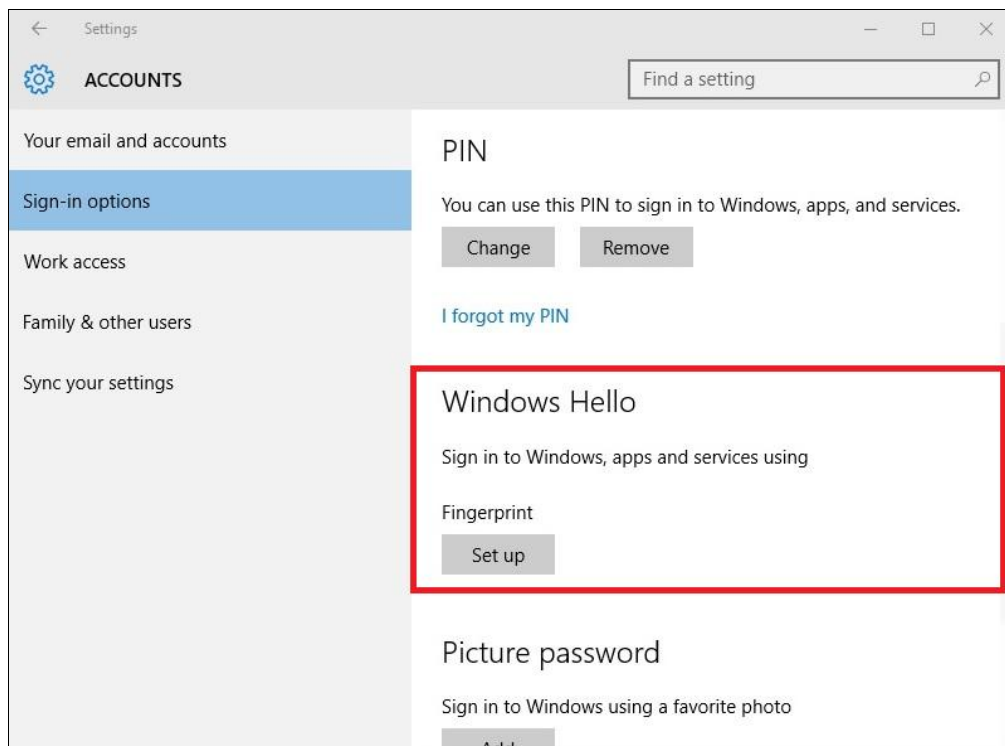
1. You must make sure the current account uses a password before you can use Windows Hello.



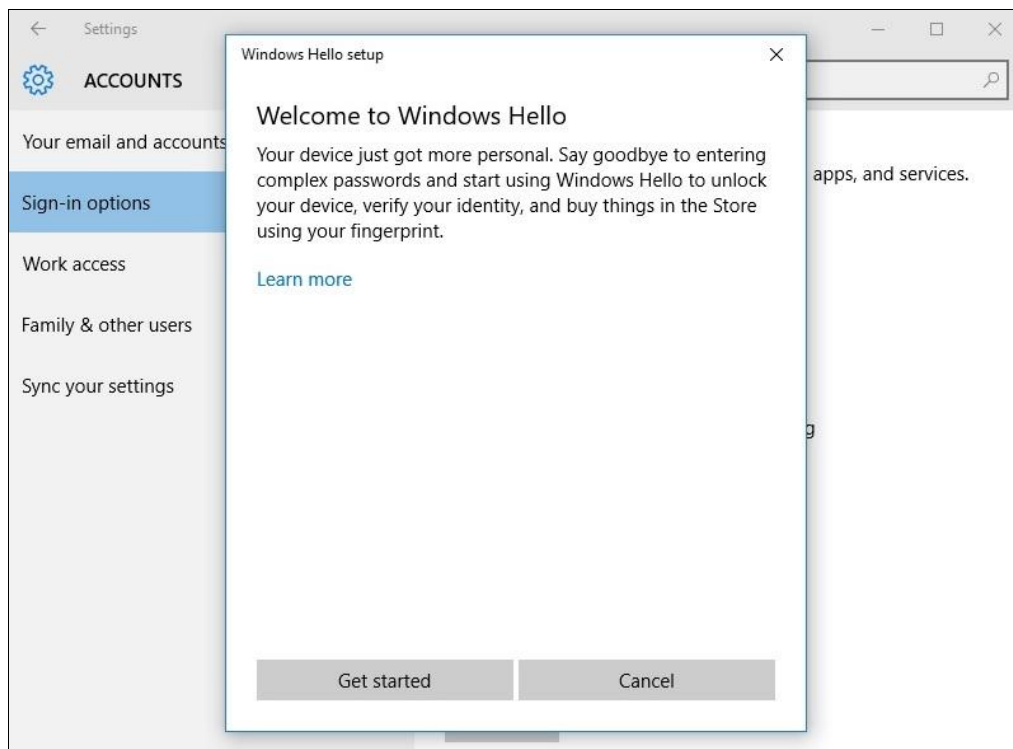
2. First open Settings and set a PIN code



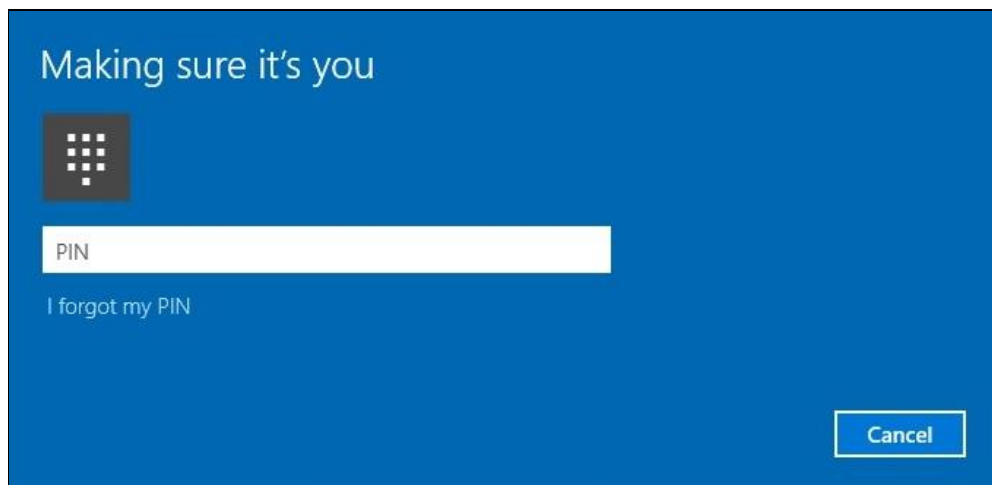
3. Find Windows Hello and click the “Set up” button



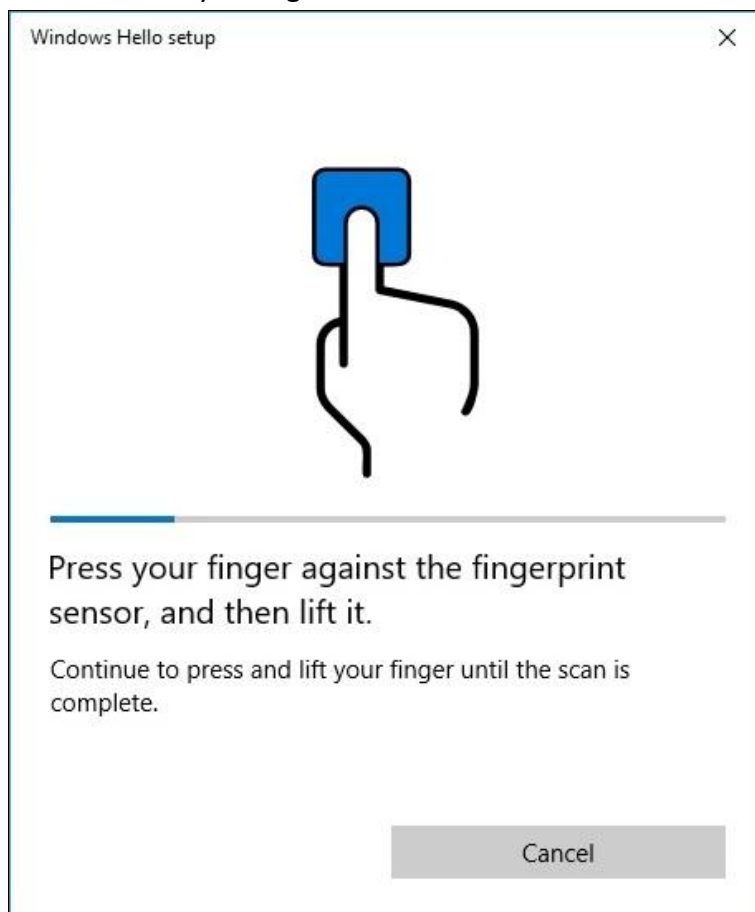
4. You will see the Welcome page; press “Get started” to start



5. You must enter your PIN first.



6. You can enroll your finger now



7. You can choose to enroll another finger, or end now.

